



NEBRASKA

MISSOURI

OKLAHOMA

COLORADO

70 OFF

**OUR GUIDE TO 70
FAMILY, FOOD AND
FUN ATTRACTIONS
JUST A SHORT DRIVE
OFF THE STATE'S
CENTRAL AND
HISTORIC HIGHWAY
CORRIDOR**

STORY BY AMBER FRALEY WITH FALLY AFANI

Start



Start

K

Kansas has always been shaped by travel routes: animal migration patterns, river passages, overland pioneer trails, railways, air fields, roadways and then—since it first opened in Kansas in 1956—the national interstate highway system. Now, perhaps no other highway defines Kansas more than the heavily traveled I-70 route that cuts the state from west to east (or east to west). It is the lifeline of communities and commuters who live along its route, and it is the thin strip of passage that many Americans take through the state on longer journeys.

Whether you are a Kansan or a visitor to the state, you can easily turn your I-70 odyssey into something else—a short discovery of new art, a magnificent meal, an educational side trip or even an inspirational contact with nature.

Here are our picks for some of the state's best encounters just off I-70 where there is a world of Kansas to explore and enjoy.

GOODLAND EXITS 17 & 19

Ennis-Handy House

A completely restored and historically furnished Queen Anne-style Victorian home with gift shop.

Goodland High Plains Museum

See a replica of the first patented helicopter in the United States, invented by Goodland residents W.J. Purvis and C.A. Wilson in 1909.

Goodland Art Tour

Goodland is home to several public art exhibits, including the Giant Grasshopper, Cameron Cross' giant replica of van Gogh's *Three Sunflowers in a Vase* and the restored White Eagle Gas Station.

White Eagle Gas Station



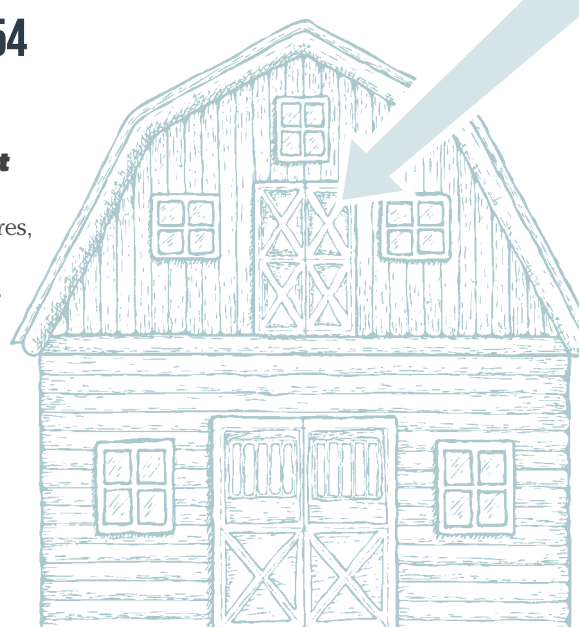
Three Sunflowers in a Vase



COLBY EXITS 53 & 54

The Prairie Museum of Art and History

Located on 24 acres, this museum is the site of a 1930s farmstead, sod house, one-room school and the historic Cooper Barn, the largest barn in Kansas.



7 Essential Kansas ROAD SNACKS

STORY BY Linda Ditch

Here are some authentic Kansas snacks to make your journey across the state a real treat.

COOKIES: Every road trip needs a sweet treat, and Helmuth Country Bakery in Hutchinson makes bags full of them for your trip. The company specialized in Peppernuts Hospitality Cookies, which is a small spice cookie brought to Kansas by Mennonite immigrants.

SNAXSUN WHEAT TREATS: Since Kansas is also the Wheat State, enjoy this treat from Wheatland Foods in Hays—popped whole wheat kernels and topped with salt, cheesy nacho, cool ranch, smoked bacon, or barbecue flavors.

CASHMERE GOURMET POPCORN: Made in Downtown Topeka, there are 15 savory and sweet flavors to pick from when buying this hand-crafted popcorn. Try the Tomado—a combo of cheesy cheddar, butter, and caramel popcorn all mixed together.

LOST TRAIL AND PRAIRIE HARVEST TRAIL MIXES: No road trip snack bag would be complete without trail mix, and Louisburg Cider Mill's Lost Trail or Newton's Prairie Harvest trail mix make for a healthy road snack.

CARR CREEK BEEF JERKY: Kansas is a great place to raise cattle, and the jerky you find here is some of the best. Carr Creek Beef Jerky is available in two flavors—original and spicy.

ALMA CHEESE CURDS: Though made in Alma, packages of these little nuggets of cheesy deliciousness can be found at just about any grocery store in the state.

SUNFLOWER SEEDS: Munching on sunflower seeds is pretty much mandatory in the Sunflower State. The Sunflower Seed Company in Lenexa not only provides snack-sized packages of shelled kernels (in honey roasted and blazin' hot flavors) but also makes Sunny Seeds—chocolate-covered sunflower kernels with a candy coating.

OAKLEY/ RUSSELL SPRINGS EXITS 70 & 76

Butterfield Trail Museum and Historical Association RUSSELL SPRINGS

A.K.A. "The Little Museum on the Prairie," this museum displays the rich history of the Butterfield Overland Despatch stagecoach line, as well as the human and natural history of this corner of the Great Plains.

The Fick Fossil and History Museum OAKLEY

Established to showcase the Fick family's findings and artwork, the Fick Museum allows you to walk through the history of Logan County. Visitors start in the Prehistoric era amid sharks teeth and fossils and finish their tour walking the through replicas of the early boardwalks of Oakley during the dust storms of the 1930s.

Buffalo Bill Cultural Center / OAKLEY

View one of the Eight Wonders of Kansas, the monumental bronze sculpture of Buffalo Bill Cody. This travel information center with maps, brochures and a gift shop featuring many Kansas-made products makes the perfect picnic spot. Pet friendly!

ELLIS/ VICTORIA EXIT 168

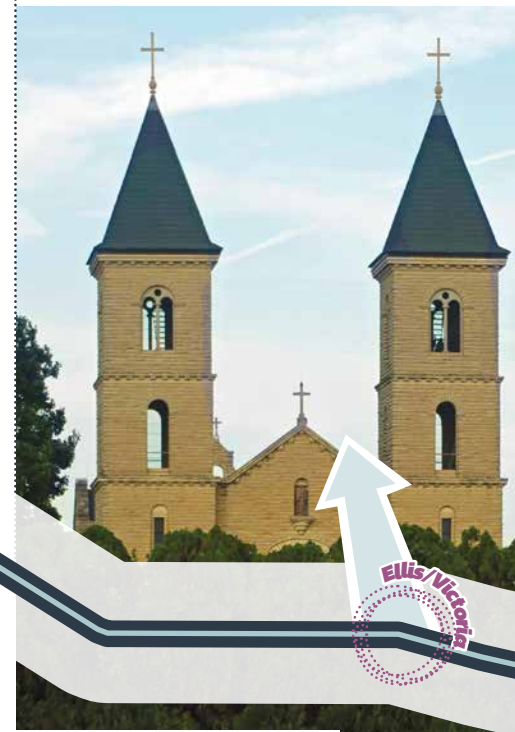
Ellis Railroad Museum / ELLIS
Over 5,000 square feet of model train layouts, plus a full-size Union Pacific caboose and a General Motors Aero Streamliner await at this museum for train lovers!

Walter P. Chrysler Boyhood Home & Museum / ELLIS

Built in 1889, this immaculately restored home is accurate to the time of Chrysler's childhood. See his many innovations and several period cars!

The Cathedral of the Plains VICTORIA

Officially the Basilica of St. Fidelis, and one of the Eight Wonders of Kansas, the Cathedral of the Plains is one of only 78 minor basilicas designated by the Vatican in the United States and the only one in Kansas. This Romanesque church was completed in 1911 from native limestone and is open to the public from dawn to dusk. Audio tours available.



The Cathedral of the Plains

Let's start from the
WEST



Friendly Face off I-70

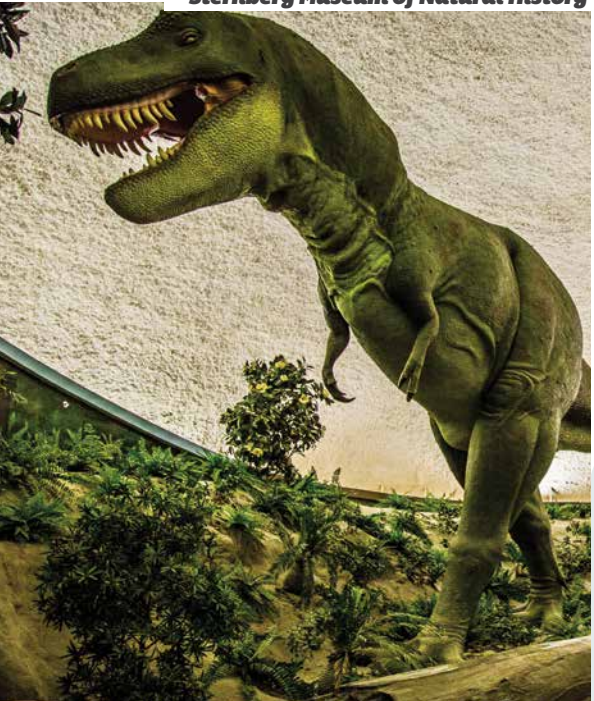
RALPH FISCHER / The Visitor's Center, Colby
If you head out for a quaint jaunt over to Colby, a very peculiar building might catch your eye. The Visitor's Center there is shaped like a grain bin—and inside, you'll meet longtime volunteer Ralph Fischer. Ralph knows all things Colby, and he's been the go-to for visitors there since it was built 14 years ago.

MID-WEST

and continue to the



Sternberg Museum of Natural History



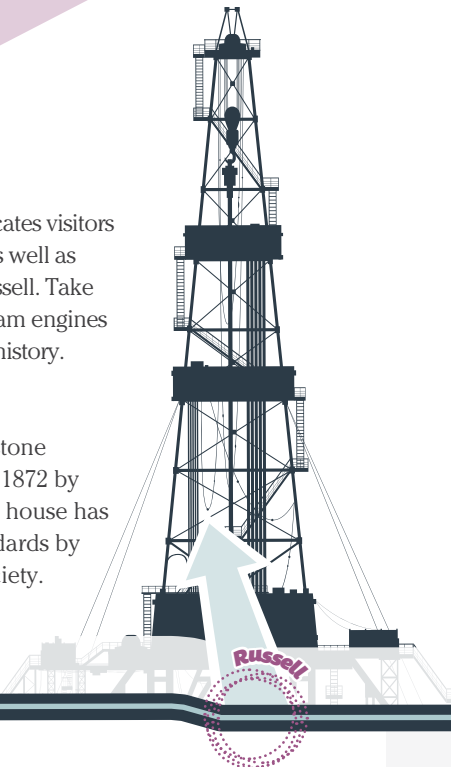
RUSSELL EXIT 184

Oil Patch Museum

The indoor-outdoor museum educates visitors on how oil is found and refined, as well as the history of oil production in Russell. Take an outdoor tour of drilling rigs, steam engines and pump jacks used throughout history.

Gernon House

The Gernon House is the oldest stone home in Russell. Constructed in 1872 by blacksmith Nicholas Gernon, the house has been fully restored to 1890s standards by the Russell County Historical Society.



ELLSWORTH/LINCOLN EXITS 219 & 221

Hodgen House Museum Complex ELLSWORTH

This historic museum complex in Ellsworth consists of the 1878 Hodgen House, 1880s livery stable, 1912 one-room school, 1880s Second Baptist Church, 1909 caboose, 1900 train depot, turn-of-the-century wooden windmill and more.

Village Lines / LINCOLN

Take a break and have a piece of homemade pie at Village Lines in Lincoln. The "little Kansas store" features local limestone art, handmade pottery, jewelry, wheat-weavings, food, books and more! Be sure to take a picture of the Lincoln County Courthouse, a massive limestone edifice listed in the National Register of Historic Places and one of the most photographed buildings in Kansas.



Lincoln County Courthouse

HAYS EXITS 157 & 159

Sternberg Museum of Natural History

This museum, home to an extensive dinosaur bone collection, houses approximately 3 million specimens that document the natural history of the Great Plains. Home of the world-famous fish-within-a-fish fossil!

Vineyard Nature Trail

View native plants and wildlife along this scenic hiking trail that takes visitors through prairies and wetlands.

Antique Mall of Hays

This shopping experience has 8,000 square feet of showroom, multiple vendors and a wide array of antiques, collectibles, furniture and lamps.

Fort Hays State Historic Site

A U.S. military post at the height of the Indian Wars from 1867–1889, at various times, Fort Hays served as home to the 7th U.S. Cavalry and the Buffalo Soldiers of the 9th and 10th U.S. Cavalry regiments. Today the site has a visitors center and four original buildings.

Frontier Park

See real live bison in this 89-acre scenic park that was once part of the Fort Hays U.S. military post. Today it features the City of Hays bison herd, large shade trees, walking trails, picnic and restroom facilities, and playground equipment.

PATRICK MCGINNIS / Breathe Coffee House, Hays

When you need a caffeine fix and conversation, Breathe Coffee is the go-to in Hays. That's where Patrick McGinnis started the coffee house under a different premise—provide a space where the primary goal is dialogue. Patrick wanted to bring the community together to discuss challenging topics (but he's all for laid-back exchanges, too). Just as long as you "make your coffee intentional."

Friendly
Face
off I-70

WILSON/SYLVAN GROVE

WILSON/ SYLVAN GROVE EXITS 206–216

World's Largest Czech Egg WILSON

View this Kansas-made 20-foot-tall painted egg in a traditional Czech design and stop for an old-fashioned ice cream soda and a slice of pizza at Grandma's Soda Shop!

Kansas Originals Market and Gallery WILSON

This unique store showcases the largest collection of Kansas goods and artists in the state! Discover Kansas-made foods, books, art, jewelry, toys and clothing and more!

Midland Railroad Hotel and The Sample Room Tavern WILSON

Listed on the National Register of Historic Places, this historic hotel and restaurant was featured in several scenes of the 1973 film *Paper Moon* starring Ryan and Tatum O'Neal. Authentic Midwestern cuisine.

Switchgrass Epic Mountain Bike Trail WILSON

This 25-mile challenges mountain bikers and hikers. Unlike any other trail in Kansas, Switchgrass is the only trail in the state to be designated Epic by the International Mountain Bicycling Association.

Wilson State Park SYLVAN GROVE

Enjoy kayaks, paddleboards and canoes, or you can take a hike at one of Kansas' most scenic, premier fishing lakes!



Wilson State Park

STEVE HOWARD / Cozy Inn, Salina

Friendly Face off I-70

At the Cozy Inn in Salina, it's all about you. Salina's oldest restaurant, known for serving up miniature burgers every day, sports a map on the wall where customers can pinpoint their hometowns. Owner Steve Howard is the friendly face behind this local joint, and the restaurant's website shares stories from all the customers who have reached out and messaged them.

SALINA EXITS 252-253

Cozy Inn, home of the Cozyburger since 1922

Stop for lunch or dinner at the iconic hamburger restaurant that's been flipping sliders since 1922. The Cozy Inn serves from 1,500 to 3,000 sliders every day!

Rolling Hills Zoo

Rolling Hills Zoo is home to big cats, primates, exotic mammals, birds and reptiles on 65 acres nestled among the beautiful Smoky Hills of Saline County.

Central Kansas Flywheels Yesteryear Museum

An agricultural and cultural museum that depicts early rural life. See farming implements and other items of settlers' early life in the Midwest.

JUNCTION CITY EXITS 299-304

U.S. Cavalry Museum, Custer House & 1st Infantry Museum at Fort Riley

Learn about the history of the U.S. cavalry, the Big Red One and military life on the western frontier during the Indian Wars period. (Please note all visitors to Fort Riley aged 16 and older must provide photo ID and submit to a quick background check in order to receive a visitor's pass.)

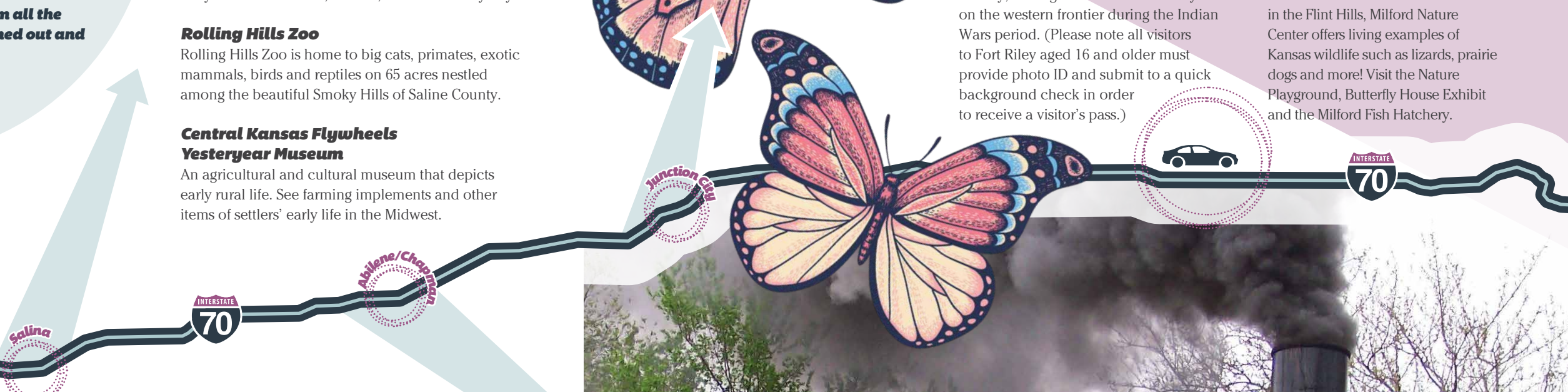
Geary County Historical Museum

Houses an extensive collection of vintage photographs, Plains Indian artifacts and a "Main Street" reproduction of six businesses typical of 1900s-era Junction City.

Milford Nature Center

Located near the Milford Reservoir in the Flint Hills, Milford Nature Center offers living examples of Kansas wildlife such as lizards, prairie dogs and more! Visit the Nature Playground, Butterfly House Exhibit and the Milford Fish Hatchery.

MID-WEST



ABILENE/ CHAPMAN EXITS 275-286

Brookville Hotel / ABILENE

Home of authentic, Midwestern, family-style, sit-down fried chicken dinners! The Brookville Hotel serves the same meals it did during the railroad expansion of the 1870s along the Chisholm Trail. Gift shop.

Russell Stover Candies Factory and Outlet Store ABILENE

Features all lines of Russell Stover, Whitman's and Pangburn's candies, plus close-outs and factory seconds. Watch the Russell Stover team prepare handmade candies, cookies and caramel apples in the candy kitchen!

Kansas Auto Racing Museum CHAPMAN

This 21-acre museum is home to the first NASCAR and NHRA trophies, as well as many restored race cars from seven different racing eras, video play stations and rare film footage.

Dwight D. Eisenhower Presidential Library, Museum & Boyhood Home ABILENE

Includes a visitors center, his presidential research library and his modest boyhood home, which has been painstakingly restored.

Seelye Mansion and Gardens ABILENE

This 25-room, Georgian-style mansion was built in 1905 for Dr. A.B. Seelye. Seelye made his fortune selling patent medicines, which visitors can learn about in the Patent Medicine Museum located inside the mansion. The mansion includes a lever-operated bowling alley, purchased from the 1904 St. Louis World's Fair.

Greyhound Hall of Fame ABILENE

After you're greeted by the museum's two greyhound racing retirees, you'll learn about greyhounds and greyhound racing from ancient times to present in this not-to-be missed tribute to man's best friend!

Dickinson County Heritage Center ABILENE

This area celebrates the unique local history and includes indoor and outdoor exhibits such as the Museum of Independent Telephony, a settler's cabin and an early grocery store. Be sure to ride the 1901 C.W. Parker Carousel while you're there!

Abilene & Smoky Valley Railroad ABILENE

All aboard! Choo-choose one of many train ride options including passenger train rides, steam train rides and dinner trains. Be sure to buy heritage flour from the Hoffman Grist Mill or take the historic home bus tour while you're there.



Abilene & Smoky Valley Railroad

to the EAST

ALMA/WAMEGO EXIT 328

Alma Creamery / ALMA
Purchase a variety of Kansas-made cheeses, milk, jerky, summer sausage, jams, fruit butters, barbecue sauces and other Kansas-made goodies at the Alma Creamery!

Oz Museum / WAMEGO
The Oz Museum is dedicated to celebrating the beloved Wizard of Oz books written by L. Frank Baum, as well as the many films inspired by those books. Lots of Oz merchandise available in the gift shop!



Oz Museum

PAXICO EXIT 332

Wyldeewood Cellars Tasting Room
Sample and purchase a wide variety of award-winning, sometimes exotic, but always delicious, Kansas-made wines!



MANHATTAN EXIT 313

Konza Prairie Trails Biological Station & Trails
A unique preserve of a native tallgrass prairie ecosystem managed by the Division of Biology, Kansas State University. Take a self-guided hike with 24 scenic and educational stops. (No dogs, please!)

Vineyard Nature Trail Kansas State University Gardens and Insect Zoo
This unique zoo offers an interactive look at numerous species of insects, including bees, beetles, walking sticks and praying mantises, as well as tarantulas, scorpions, and more!

Aggieville
Take a stroll and experience the unique shops and eateries in the oldest shopping district in Kansas! You'll find everything from tacos to Thai food to fine art and Wildcat clothing and souvenirs. Aggieville has something for every visitor!



3 Delightful REST STOPS along I-70

STORY BY Kim Gronniger

Road trips require frequent breaks not only for buying fuel but also for stretching legs and filling stomachs with the beverages, bonbons and blue-plate specials the locals favor. If your travel plans call for a trek across I-70, get your motor runnin' with these Kansas prairie pit-stops, shops and fun photo-ops.

Stuckey's Maple Hill
At the state's sole Stuckey's, a chain staple for travelers seeking souvenirs and pecan logs since the 1930s, stock up on sweet and savory seasoned nuts, cellophane packets of circus peanuts and rock candy sticks to enjoy on your journey. Pick up a tornado snow globe, refrigerator magnet or other trinket for an Americana keepsake.

Kansas Originals Market and Gallery, Wilson
Dandelion jelly or homemade fudge, anyone? This roadside respite draws thousands of visitors each year. The acclaimed store celebrates artistic ingenuity evident in everything from hand-stitched quilts and cowhide coatracks to limestone name posts and wheat-woven dolls and windmills.

The Pennant, Topeka
If you can plan a gas stop anywhere on the east side of Topeka, call ahead to The Pennant to place an order for sandwiches, locally sourced salads, milkshakes or fries. Kids (and nostalgic adults) can take a short break playing at the diner's 25 vintage arcade games.



TOPEKA EXITS 353–366

Evel Knievel Museum

See this extensive collection of '70s icon Evel Knievel's helmets, costumes, motorcycles and even his iconic 1974 Mack Truck & Trailer "Big Red" at Historic Harley Davidson in Topeka!

Kansas Museum of History

This award-winning museum tells the history of the people of Kansas. See Carry Nation's hatchet, William Allen White's printing press and a full-sized 1880s Atchison, Topeka and Santa Fe locomotive. Hands-on historical fun for the kids in the Discovery Place!

Brown v. Board of Education National Historic Site

Established by Congress to commemorate the landmark U.S. Supreme Court decision aimed at ending racial segregation in public schools.

Ward-Meade Historic Site

This historic district includes a botanical garden and Old Prairie Town featuring the Ward-Meade Victorian mansion, the Mulvane General Store Visitors Center and Gift Shop, and the Potwin Drug Store with working soda fountain.

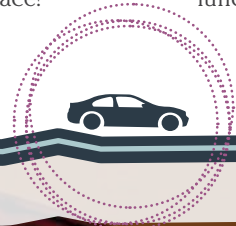
Kansas State Capitol Building

See John Steuart Curry's historic John Brown mural *Tragic Prelude* and take a free tour of the Capitol dome. Stop for lunch in downtown Topeka!



Haskell Cultural Center and Museum

continuing through the
EAST



LAWRENCE/ LECOMPTON EXITS 197, 202, 204

Historic Downtown Lawrence

LAWRENCE
Discover blocks of fantastic dining and eclectic shopping in this uniquely preserved Midwestern downtown district.

University of Kansas Natural History Museum / LAWRENCE

View the historic diorama prepared by Kansas professor Lewis Lindsay Dyche for the 1893 Chicago World's Fair, the horse Comanche that survived the Battle of the Little Bighorn, dinosaur fossils and more. Gift shop.

Booth Family Hall of Athletics

LAWRENCE
This museum, adjacent to Allen Fieldhouse honors KU's athletes and coaches and features Dr. James Naismith's 13 Original Rules of "Basket Ball." Self-guided and guided tours available. Gift shop.

Haskell Indian Nations Walking Tour / LAWRENCE

Haskell Indian Nations University (HINU) is one of the nation's most respected tribal universities. Visit the Haskell Cultural Center and Museum and take a self-guided tour of the historic campus!

Prairie Park Nature Center

LAWRENCE
Nature center featuring live birds of prey such as eagles and hawks, as well as walking paths covering 100 acres of woodlands, wetlands, prairie habitats and a lake.

Baker Wetlands Discovery Center

LAWRENCE
Named "the most beautiful place in Kansas" by *House Beautiful* magazine, the Baker Wetlands encompasses 927 acres of wetland with 11 miles of trails and features a breathtaking array of native wildlife and plants. Learn about the wetland ecosystem in the Discovery Center!

Clinton State Park

LAWRENCE
This scenic lake with marina features camping, 25 miles of hiking and biking trails, a swim beach, traditional golf course and disc golf course, the Mutt Run off-leash dog park and four playgrounds.

Constitution Hall in Lecompton

LECOMPTON
National Historic Landmark where the Kansas Territorial Government convened, and a large antislavery delegation met to protest the proslavery constitutional convention.

BOB WERTS / Waxman Candles, Lawrence

In the artsy community of Lawrence, you'll find one man completely immersed in his artistry. Bob Werts is known as "the Wax Man," and runs the store by the same

name (Waxman Candles). A number of programs help the community take part in candle-making, and on any day Bob's there, inviting shoppers to watch the process of making hand-dipped candles.

Friendly Face off I-70

Kansas State Capitol Building

Friendly Face off I-70

MIKE AND JOE PEARCE / Slap's BBQ, Kansas City
In Kansas City, you'll find not one but two friendly faces at this local institution. Brothers Mike and Joe Pearce started Slap's BBQ after wanting to turn their love of cooking into a reality. The brothers compete in dozens of contests every year and love chatting it up with customers at what they refer to as their "no-nonsense" BBQ joint.

KANSAS CITY EXIT 423A

Strawberry Hill Museum and Cultural Center

See this historic, restored Queen Anne-style mansion built in 1887, later purchased by St. John's Catholic parish and used as an orphanage from 1919-1988. The gift shop features artwork and items of the Baltic and Slavic heritage of the neighborhood. Hourly tours.

Legends Outlets

Acres of outlet shopping, dining and entertainment, including Cabela's, Dave & Buster's and Sporting Kansas City soccer.



Finish Your Degree Online - getaheadkansas.org

The **Adult Higher Education Accessible Degrees** initiative, a Kansas Board of Regents project funded by the Lumina Foundation, can help you:



- Enroll in an online degree program
- Transfer credits already earned
- Get credit for prior learning and military training
- Find out about financial aid options
- Finish your degree and get a promotion or a better job

According to the U.S. Department of Labor people who have an associate or a bachelor's degree earn significantly more on average than those who have some college credit but no degree.

And according to a recent national survey, online and adult students are generally more satisfied with their overall college experience than traditional aged on-campus students.



to the **EAST**



BONNER SPRINGS EXIT 224 EASTBOUND & EXIT 410 WESTBOUND

Moon Marble Company

See live marble-making demonstrations and shop for a wide assortment of factory-made and handmade marbles in a rainbow of colors. Toys, too!

Zip KC, a zip-line park

Over one mile of zip-lining above the bluffs of the Kansas River on nine different zip lines reaching speeds of up to 50 mph!

National Agriculture Center and Hall of Fame

Chartered in 1960 to educate the public on the history and future of American agriculture, the Ag Hall of Fame features the National Farmer's Memorial, National Poultry Museum and "Farm Town U.S.A." **KM**

ZIP KC

KANSAS!

A great marketing tool for your business.

TO ADVERTISE, CONTACT
Joanne Morgan
 (785) 832-7264 / jmorgan@sunflowerpub.com

WINFIELD ART IN THE PARK

October 6, 2018
 Island Park, Winfield, KS

- Outdoor art festival • Entertainment • Wine Tasting
- Children's art activities • Food vendors • Juried Show

12 x 12 booth for \$40

Sponsored in part by Winfield Convention & Tourism

(620) 221-2161 | www.winfieldarts.org

The City of Osage City Kansas

Proud Past - Brilliant Future

Smoke in the Spring
 State BBQ Championship
 Friday April 12, 2019

785-528-3714 (Osage City Hall)
www.OsageCity.com